

DESERT MOUNTAIN ENERGY CORP.

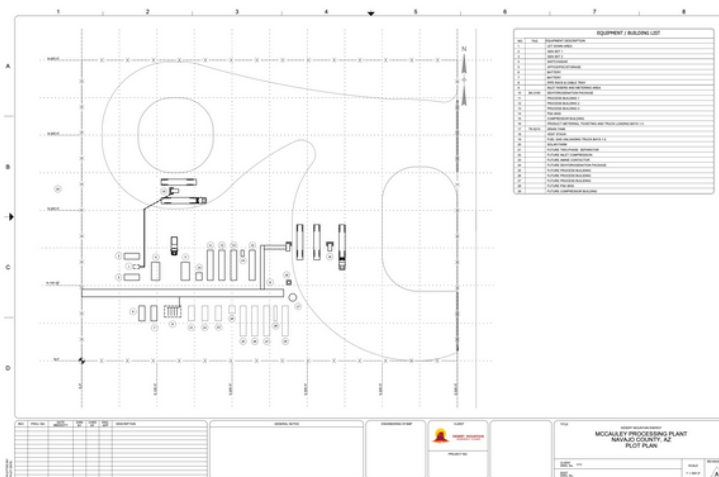
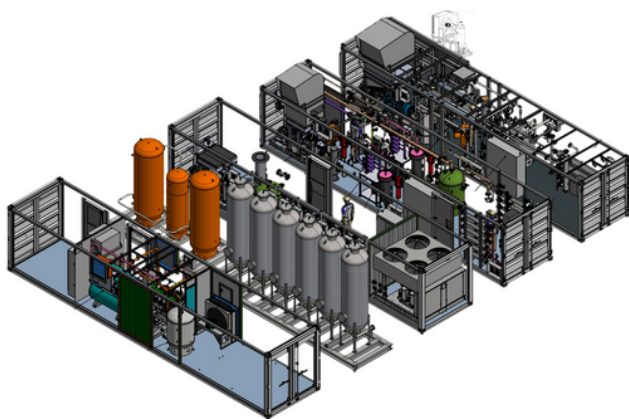
The Exploration & Development of Helium in Arizona

Desert Mountain Energy Corp. is building a vertically integrated company focused on the discovery and development of rare earth gas fields in the US. The Company is primarily looking for elements deemed critical to the green energy and high technology industries.

Developing Primary Helium Production and Processing

- Successfully drilled and set production casing in 7 helium wells
- Discovered 3 helium fields
- Discovered sulphur-free hydrogen in 2 of the helium fields
- The McCauley Helium Field Processing Plant is under construction with completion scheduled in Q3
- Plan to drill Gunner Dome wildcat in July
- Plan to drill another offset in the McCauley Helium Field
- Wells #2, #4, #5, #6 & #7 and the new offset will be in production in Q4

The McCauley Helium Processing Facility Layout



Management



Robert Rohlifing CEO,
Executive Chairman

Don Mosher – President, Director

Scott Davis – Chief Financial Officer

Dr. James Cronoble – Vice
President of Exploration, Director

Frances Murphy – Corporate
Secretary

Jessica Davey – Vice President of
Land, Director

Marta Wasko – Vice President of
Geology

Board of Directors

Robert Rohlifing – CEO, Executive
Chairman

Don Mosher – President, Director

Dr. James Cronoble – Vice
President of Exploration, Director

Jessica Davey – Vice President of
Land, Director

Jenaya Rohlifing – Director

Dr. Kelli Ward – Director

Weldon Stout – Director



The McCauley Helium Field

Discovery Well #4 (Chevlon Well 11-1)

A flow rate of 1587 MCFGPD water-free

The average gas analysis showed:

Helium- 1.137%
Nitrogen- 94.6536%
Methane- 3.1311%
Ethane- 0.2732%
CO2- 0.1428%
O2- 0.6623%

Offset Wells #5, 6 & 7

Average starting flow rates:

Nitrogen- 96.4689%
Helium- 3.511%
Carbon Dioxide- 0.0201%

Well #2

Nitrogen - 91.97%
Helium - 4.171%
Hydrogen - 3.832%
Carbon Dioxide - 0.019%



Share Structure

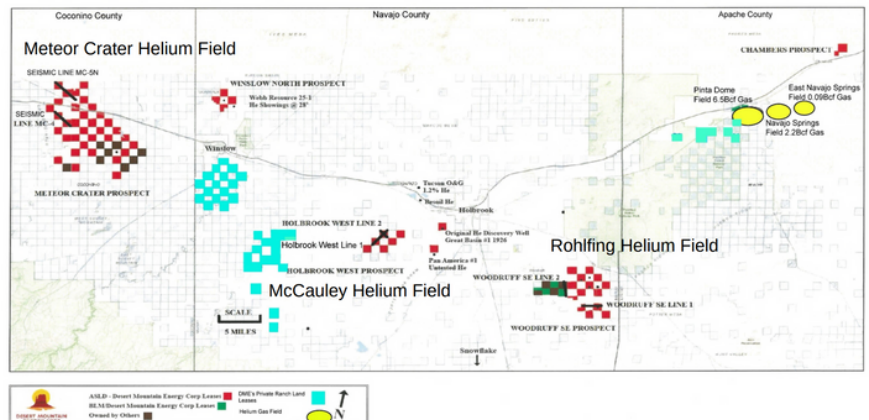
Shares issued & outstanding: 74,988,988
Options : 6,812,500
Warrants : 171,326
Fully diluted : 81,972,814

TSXV- DME
OTCQB - DMEHF
FSE - QMOI

CONTACT INFORMATION

Don Mosher- President, Director
don@desertmountainenergy.com
(604) 617-5448

DME's Lease Holdings & 2D Seismic Geophysical Lines, Holbrook Basin, Arizona



Desert Mountain Energy Corp. is an equal opportunity employer. We celebrate diversity and are committed to creating an inclusive environment for all employees.

